

# Installing the KDA plug-in

## Contents

Installing the KDA plug-in.....	1
Contents .....	1
SPSS Version Considerations.....	2
Installation steps.....	2
1. Copy the <b>KeyDrivers-SV.zip</b> file into an empty folder.....	2
2. Unzip the files from the zip into that folder .....	2
3. Copy the chart template file to your SPSS installation folder.....	3
4. Launch SPSS .....	3
5. Add the custom dialog into SPSS Statistics.....	3

## SPSS Version Considerations

The KDA plug-in uses a chart template file (discussed below). It currently assumes that you are running SPSS Statistics version 22. However it can be adapted to run against an earlier version of SPSS if you have one.

If you need to install to an earlier version please email us at [support@sv-europe.com](mailto:support@sv-europe.com).

## Installation steps

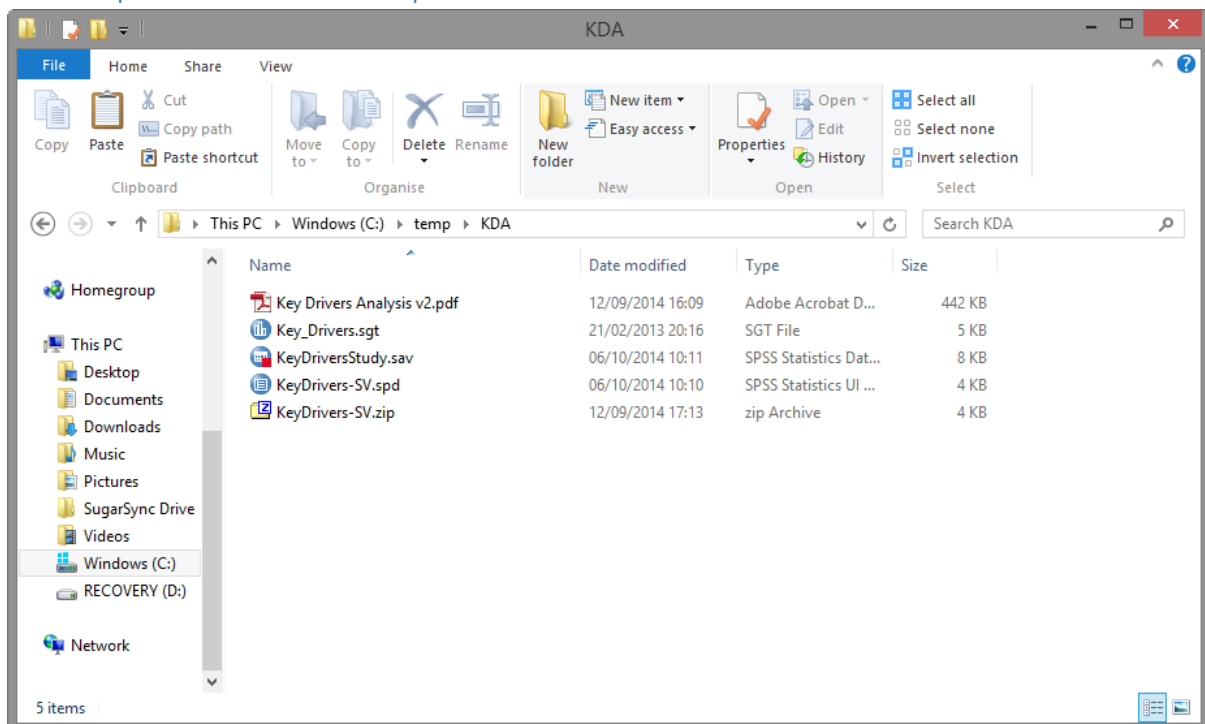
The installation consists of 4 steps

1. Copy the **KeyDrivers-SV.zip** file into an empty folder
2. Unzip the files from the zip into that folder
3. Copy the chart template file to your SPSS installation template folder
4. Launch SPSS
5. Add the custom dialog in SPSS

### 1. Copy the **KeyDrivers-SV.zip** file into an empty folder

In our example we copied the files to c:\temp\KDA

### 2. Unzip the files from the zip into that folder



The **KeyDriversStudy.sav** file is the SPSS data file referenced in the User Guide

### 3. Copy the chart template file to your SPSS installation folder

The chart template file **Key\_drivers.sgt** should be copied to the SPSS 22 templates folder

**C:\Program Files\IBM\SPSS\Statistics\22\Looks\**

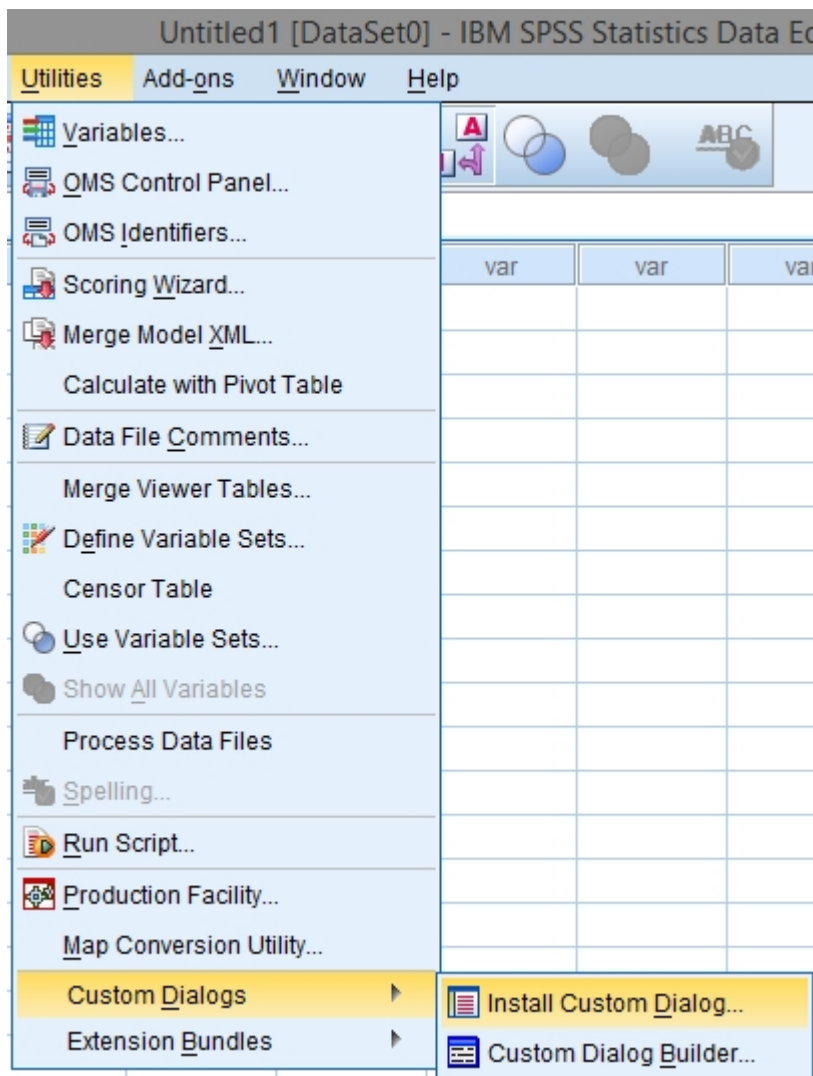
### 4. Launch SPSS

Launch SPSS in the usual way

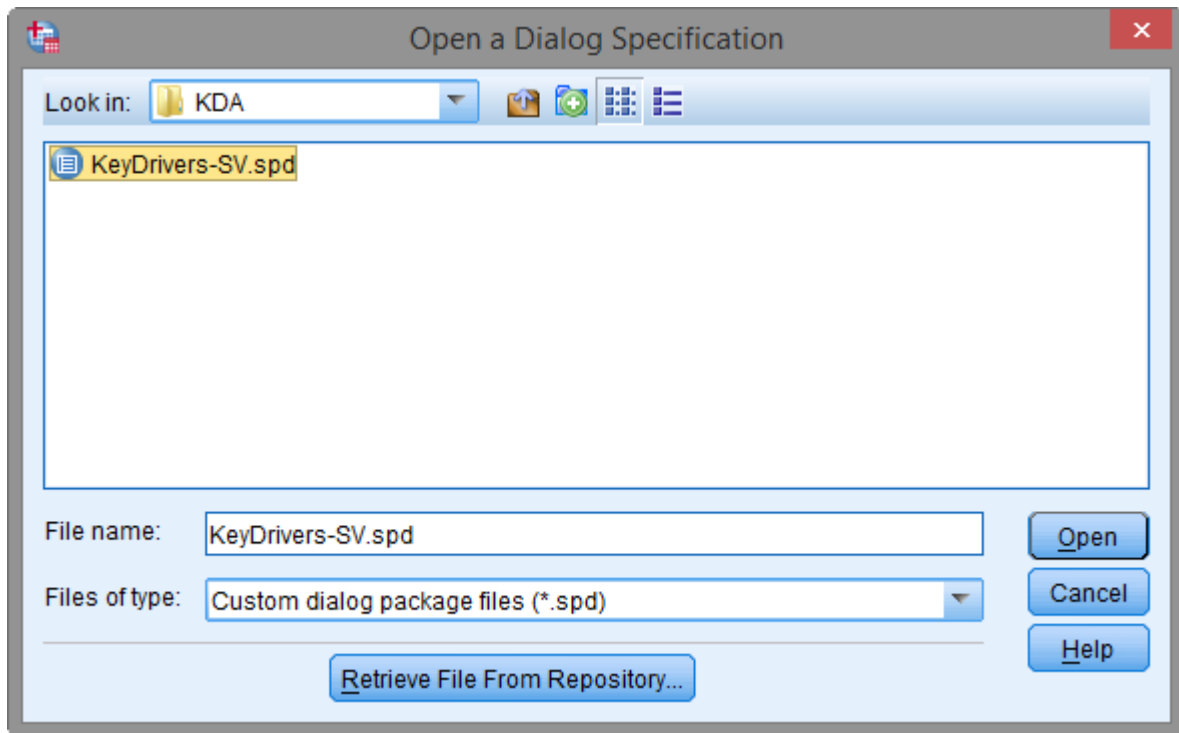
### 5. Add the custom dialog into SPSS Statistics

In SPSS Statistics navigate to the **Install Custom Dialog** tool

**Utilities | Dialogs | Install Custom Dialog...**



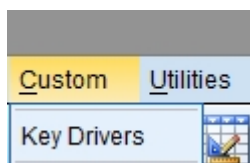
Navigate to the folder into which you unzipped the .spd (custom dialog) file



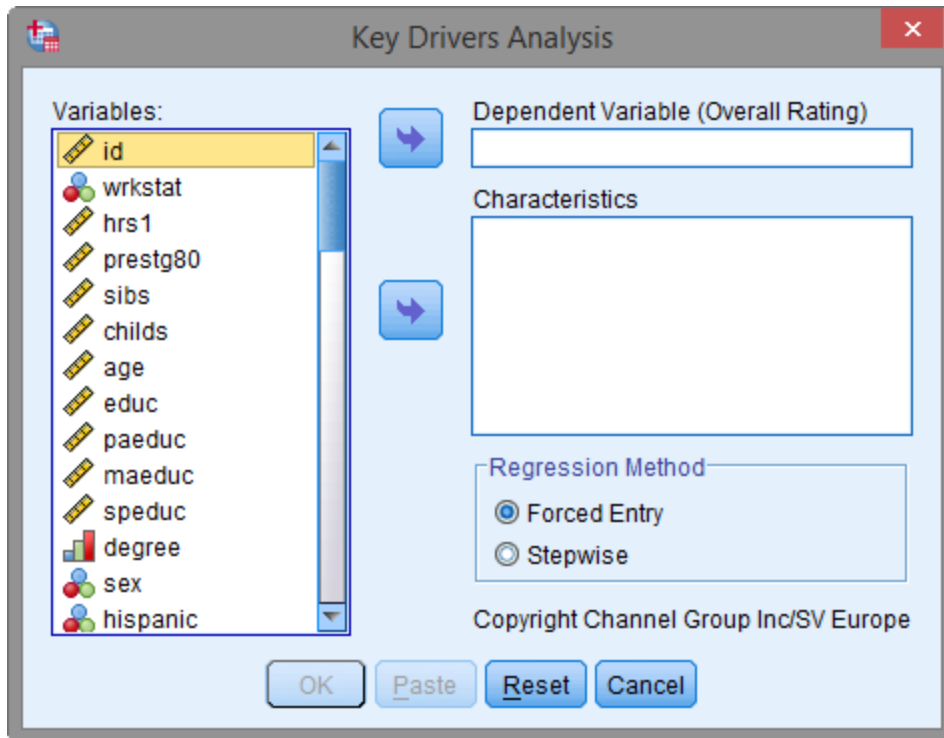
Select **Open**

Back in SPSS a Custom dialog should have been installed and it can be launched from

**Custom | Key Drivers**



When this menu choice is selected the Key Drivers dialog should appear (as usual you will need to have a data file open in SPSS to use it).



Further documentation on how to perform key driver analysis can be downloaded from our website (**Key Drivers Analysis v2.pdf**).

If you have any problems installing the KDA tool please contact [support@sv-europe.com](mailto:support@sv-europe.com) .