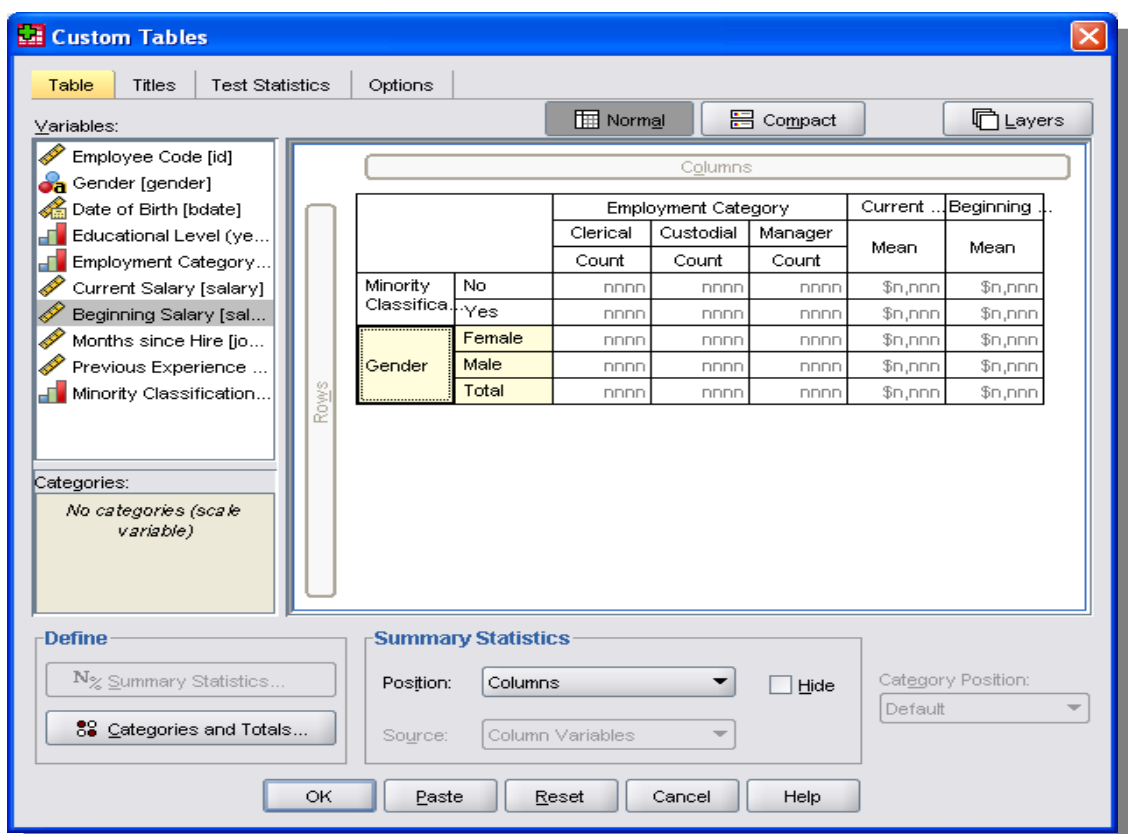


IBM SPSS Tables

- The IBM SPSS Tables module is designed for analytical reporting. Tables allows users to save time by creating publication quality reports from a single dialog.
- Without the Tables module, users often have to create crosstabs and means reports in SPSS Statistics Base before copying and pasting them into a 3rd party application (such as Excel) for further editing before finally pasting the output into their report.
- IBM SPSS Tables allows a high degree of control over the appearance and content of tabular reports.
- Key functionality of IBM SPSS Tables includes:
 - Category management capabilities to exclude specific categories, display missing value cells, and add subtotals to your table
 - Three significance tests: Chi-square test of independence, comparison of column means (t test), or comparison of column proportions (z test)
 - Creation and tabulation of multiple response data
 - Create tables showing a vast range of summary stats in the same table: weighted and unweighted counts/percentages, means, medians, sub-totals, percentiles
 - Control of titles, column headings, decimal display, font, visible lines
 - Ability to export output to: Word, Excel, PowerPoint, HTML and PDF
- A single dialog box for all tabulation and reports which allows users to preview the table as it is being built by fields being dragged and dropped into the rows and columns.



- The resulting tables can be represented in multiple formats by custom alterations and the creation or use of TableLook templates before being exported to Word, Excel, PowerPoint, HTML or PDF.

		Employment Category			Current Salary	Beginning Salary
		Clerical	Custodial	Manager	Mean	Mean
		Row Percent	Row Percent	Row Percent		
Minority Classification	No	75%	4%	22%	\$36,023	\$17,673
	Yes	84%	12%	4%	\$28,714	\$14,679
Gender	Female	95%	0%	5%	\$26,032	\$13,092
	Male	61%	10%	29%	\$41,442	\$20,301
	Total	77%	6%	18%	\$34,420	\$17,016

		Employment Category			Current Salary	Beginning Salary
		Clerical	Custodial	Manager	Mean	Mean
		Row Percent	Row Percent	Row Percent		
Minority Classification	No	75%	4%	22%	\$36,023	\$17,673
	Yes	84%	12%	4%	\$28,714	\$14,679
Gender	Female	95%	0%	5%	\$26,032	\$13,092
	Male	61%	10%	29%	\$41,442	\$20,301
	Total	77%	6%	18%	\$34,420	\$17,016

		Employment Category			Current Salary	Beginning Salary
		Clerical	Custodial	Manager	Mean	Mean
		Row Percent	Row Percent	Row Percent		
Minority Classification	No	75%	4%	22%	\$36,023	\$17,673
	Yes	84%	12%	4%	\$28,714	\$14,679
Gender	Female	95%	0%	5%	\$26,032	\$13,092
	Male	61%	10%	29%	\$41,442	\$20,301
	Total	77%	6%	18%	\$34,420	\$17,016